



SOUNDS OF SUNDAY

Orchestras fill two venues with music.

PAGES A2, A3



HELLO, NEW YEAR!

Photos from our first photo of the year event.

PAGE A6

Palm Beach Daily News

THE SHINY SHEET®

ESTABLISHED 1897

THE LEADER IN COVERING THE ISLAND



TUESDAY, JANUARY 8, 2019

\$2.00

Lectures to focus on 'Rising Water'

Preservation Foundation series will explore potential impacts and mitigation strategies

By Darrell Hofheinz
Daily News Real Estate Writer

Water, water everywhere? Well, maybe not everywhere. But more climatologists are warning that South Florida's coastal areas will face increased risks of flooding from rising sea levels in the coming decades.

With that in mind, the



Goodell

Preservation Foundation of Palm Beach is trying to stay ahead of the tide by providing information about flooding risks and possible solutions through its "Rising Water Series" of lectures, said foundation Executive Director Amanda Skier.

The program kicks off Thursday with a talk at The Colony by environmental journalist Jeff Goodell, whose latest

book is "The Water Will Come: Rising Seas, Sinking Cities, and the Remaking of the Civilized World."

"We have received much interest and praise of our efforts to educate the community on this issue," Skier said, referring to effects of sea-level rise and its impact on the "built environment."

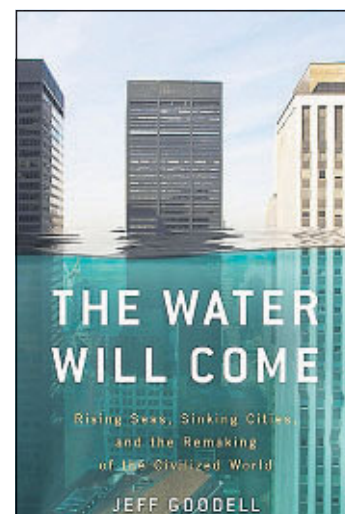
The lecture series is a welcome development that will help educate the public about the very real flooding risks facing Palm Beach, said Town Councilman

Lew Crampton.

"I think it's a great idea because we are facing inevitable sea-level rise. We are a barrier island, and we certainly are at risk," Crampton said. "We just can't sit here and be blind about this whole thing."

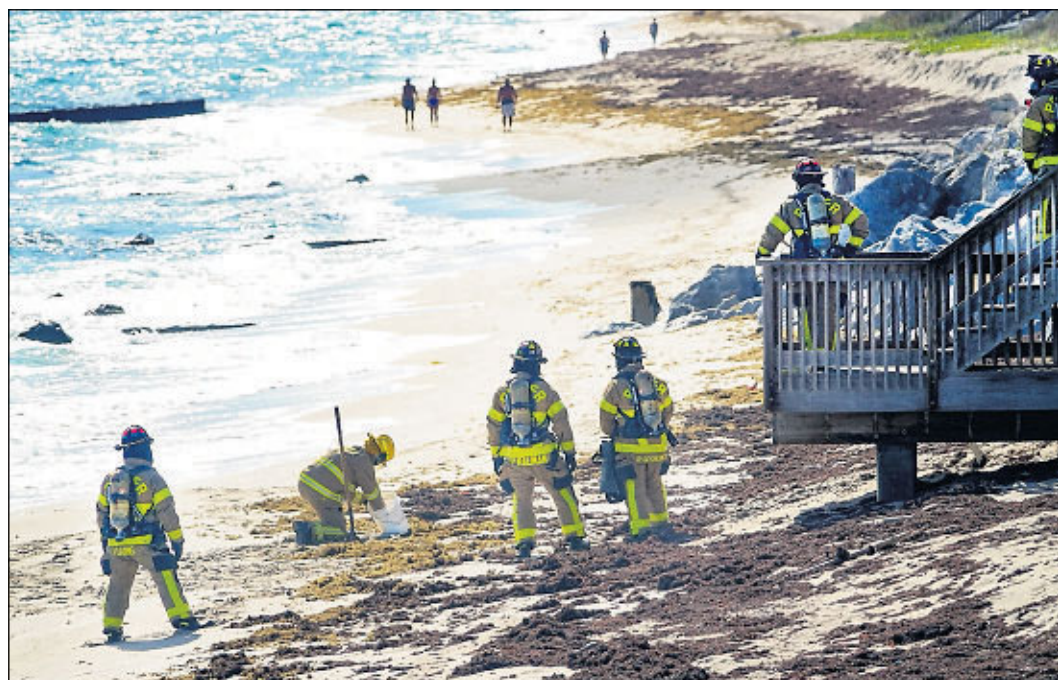
Goodell's is the first in a series of monthly lectures that continue through April. Speakers will focus on "ways our built environment and historic resources can be protected from the threats of

See WATER, A3



Author Jeff Goodell's lecture on Thursday will be based on his latest book.

Military device brings out bomb squad



Members of Palm Beach Fire Rescue and the Palm Beach County Sheriff's Hazmat and Bomb Squad secure the area where a military flare washed ashore Monday. See story, page 2. [MELANIE BELL/PALMBEACHDAILYNEWS.COM]

Upcoming art fair a destination for serious collectors

Palm Beach Modern + Contemporary has more space, more dealers, more works

By Jan Sjoström
Daily News Staff Writer

Palm Beach Modern + Contemporary will return this week for its third edition in downtown West Palm Beach.

The fair will open with a by-invitation preview Thursday benefiting the Ann Norton Sculpture Gardens in West Palm Beach and the Joe Namath Foundation and will run through Sunday in a deluxe tent at Dixie Highway and Okeechobee Boulevard.

In honor of the 50th anniversary of Namath's most-valuable-player performance and Super Bowl III victory, artists such as Bradley Theodore, Skyler Grey and Yigal Ozeri have created portraits of the former quarterback. Proceeds from sales will go to Namath's foundation, which benefits children's charities and neurological research.

The fair will feature 68 dealers (up from last year's 62) and cover 75,000 square feet -- an increase of 5,000 square feet.

"We've grown physically and maxed out the tent site," said organizer Nick Korniloff, whose company also runs Art Miami, Context Art Miami and other fairs. "But we were selective in making sure the heart of the fair represented blue chip modern and contemporary art."

All the dealers also exhibit in either Art Miami or Context Art Miami. The Palm Beach fair "is a microcosm of what we do during Art Basel Miami Beach fair week," Korniloff said. But unlike the Miami fairs, this one is held conveniently close to an important group of serious collectors who might not attend fair

See FAIR, A4

Next hearing in utilities suit set for Friday

By Ian Cohen
Daily News Staff Writer

The next step in a lawsuit filed against the town and its underground utility project will take place Friday, court records show, when the two plaintiffs argue the suit should earn a class-action classification.

The suit, filed in July 2017 by residents Carol Kosberg and Michael Scharf, challenged the Town Council's decision to impose special assessments on property owners to

help pay for Palm Beach's estimated \$90 million townwide underground utility project, a multiyear plan to bury overhead utility lines.

In their suit, Kosberg and Scharf said the special assessments are invalid because the town relied upon a consultant's "arbitrary assessment" methods and claimed the town used the consultant's subjective findings to assess properties. They say the consultant's report "hypothesized" special benefits of safety, reliability and aesthetics based on a property's size, density,

location and other factors.

The town has said it is using assessment methodology that has been upheld by the courts in other cases, Palm Beach Daily News archives show.

As part of their suit, Kosberg and Scharf are asking a judge to declare the special assessments void and refund owners for any assessments already paid, among other requests. But first, a judge must certify the case as a class action.

See HEARING, A2

An opportunity for oenophiles



Andrew McGowen checks the aroma of a Barbera from Piedmont, Italy, at a tasting at Virginia Philip, titled "Passions: The Wines + Travels of Thomas Jefferson" by James Gabler. Four wines were selected "from regions that illustrate the travels of Jefferson," Philip said. [MELANIE BELL/PALMBEACHDAILYNEWS.COM]

The Price Your Jewelry's Been Looking For

CALL OR TEXT TO SELL YOUR JEWELRY
561.832.1397

VISIT US ONLINE
circajewels.com

Recently Purchased
Boucheron Invisibly-Set Sapphire and Diamond Ring — Circa 1940

PALM BEACH
44 Coconut Row, Suite L101

BOCA RATON
433 Plaza Real, Suite 275

CIRCA
WORTH MORE

FAIR

From Page A1

week, he said.

Casterline|Goodman Gallery, which has galleries in Aspen, Chicago and Nantucket, has exhibited at Art Miami but never before at Palm Beach Modern + Contemporary.

“A strong group of our collectors have second homes in the Palm Beach area,” Robert Casterline said.

The gallery focuses on secondary market, investment-grade art and offers advisory services. Among the works it’s featuring is “Paper Fuji,” a 1996 oil on paper by Gerhard Richter.

The top of the art market remains strong, particularly classic, post-war contemporary art, said art adviser Ray Waterhouse of London and New York-based Waterhouse + Dodd. “But one does have to be selective,” he added.

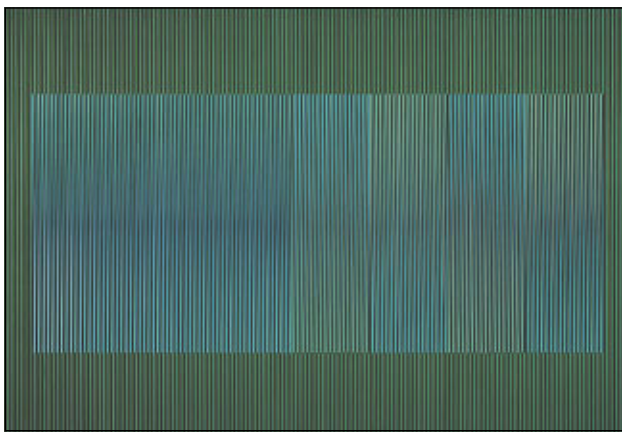
If You Go

What: Palm Beach Modern + Contemporary
Where: 825 S. Dixie Highway (at Okeechobee), West Palm Beach
When: By-invitation preview: 5-9 p.m. Thursday. Regular hours: 11 a.m.-7 p.m. Friday-Sunday
For information: Call 800-376-5850 or visit artpbfair.com

The rise of art fairs and the internet have widened options for collectors but not eliminated the need for expert advice, he said.

Waterhouse + Dodd’s selection will include six-figure works -- such as Wayne Thiebaud’s “Food Bowls,” an oil from 2005 valued at \$3 million -- as well as lower priced art.

Ascaso Gallery, which has bases in Caracas and Miami, has shown at Palm Beach Modern + Contemporary every year, in addition to its sister fairs in Miami.



Venezuelan-born Carlos Cruz Diez's Physichromie N 836, a 1975 mixed media on aluminum work, will be featured at Ascaso Gallery during Palm Beach Modern + Contemporary. The fair will be held Thursday through Sunday in downtown West Palm Beach. [PHOTO BY MARIANO COSTAPEUSER]

The gallery specializes in art by Venezuelan masters but also stocks works by other Latin American artists. Its business has grown so much that it’s adding a second, larger space in downtown Miami that’s more than twice the size of its 5,000-square-foot gallery in Wynwood.

Works at its booth will

include “Physichromie N 836,” a 1975 mixed media on aluminum piece by Venezuelan-born kinetic artist Carlos Cruz Diez. He’s known for relief works made of thin, colored slats used vertically to create the optical illusion of movement.

Tansey Contemporary is represented at not only the



Secret Garden (Autumn) is among the 27 recent works featured in glass master Lino Tagliapietra's solo exhibition at Schantz Galleries' booth. [COURTESY OF SCHANTZ GALLERIES]

fair but also two exhibitions at the Ann Norton Sculpture Gardens, the fair’s satellite partner in West Palm Beach, where the glass exhibition “Murano Mosaics -- Persistence and Evolution and Contours in Metal: Sculpture by Gino Miles” is on display.

The focus of the gallery, which is based in Denver, “is at the intersection of fine craft, contemporary art and design,” Jennifer

Tansey said.

Examples at the fair will include Danish artist Guggler Petter’s “Portrait of a Woman #25,” part of her newspaper-and-mixed-media series inspired by Leonardo da Vinci’s mold-breaking 15th-century portrayals of women.

The glass show at the Ann Norton features works by Italian master Lino Tagliapietra and artists who adopted his techniques. At the fair, Schantz Galleries will exhibit a solo show of Tagliapietra’s recent works. The artist will attend the opening and stop by the booth at other times.

Korniloff said he noticed collectors doing a lot of comparative shopping at his company’s Miami fairs. He predicts Palm Beach Modern + Contemporary won’t disappoint them. “This is the best lineup we’ve put out to date,” he said.

jsjostron@pbdailynews.com

MOVIE TIMES

WEST PALM BEACH

AMC CityPlace 20
 545 Hibiscus St., 833-2310
 Aquaman (PG-13) Tue. 2:35, 6, 9:25
 Bohemian Rhapsody (PG-13) Tue. 12:15, 3:25, 6:35, 9:45
 Bumblebee (PG-13) Tue. 12, 1:10, 3:10, 6:05, 7, 9
 Creed II (PG-13) Tue. 12:50, 4, 7:05, 10:10
 Dr. Seuss' The Grinch (PG) Tue. 12:20, 2:55, 5:15, 7:35
 Escape Room (PG-13) Tue. 1:15, 4, 6:45, 9:30
 Fantastic Beasts: The Crimes of Grindelwald (PG-13) Tue. 12, 6:10
 The Favourite (R) Tue. 1:40, 4:30, 7:30, 10:15
 Green Book (PG-13) Tue. 12:30, 3:35, 6:40, 9:40
 Holmes & Watson (PG-13)

Tue. 12:15, 2:50, 5:25, 8, 10:15
 Instant Family (PG-13) Tue. 3:20, 9:35
 Mary Poppins Returns (PG) Tue. 12, 1, 4, 6:10, 7, 10
 Mary Queen of Scots (R) Tue. 12:55, 3:55, 6:55, 9:55
 Mortal Engines (PG-13) Tue. 9:05
 The Mule (R) Tue. 1:25, 4:15, 7:10, 9:55
 Ralph Breaks the Internet (PG) Tue. 12:25, 3:05, 6
 Second Act (PG-13) Tue. 1:55, 4:55, 7:55, 10:15
 Spider-Man: Into the Spider-Verse (PG) Tue. 12, 4:35, 7:25, 10:15
 Vice (R) Tue. 1:05, 4:20, 7:20, 10:10
 Welcome to Marwen (PG-13) Tue. 9:50

LAKE WORTH

Stonzek Theatre
 713 Lake Ave., 296-9382
 Call theater for show information.

PALM BEACH GARDENS

Cobb Downtown 16
 11701 Lake Victoria Gardens Ave., 253-1444
 Aquaman (PG-13) Tue. 10:30, 11:10, 1:30, 2:15, 4:30, 5:15, 7:30, 8:15, 10:30
 Bohemian Rhapsody (PG-13) Tue. 10:45, 1:45
 Bumblebee (PG-13) Tue. 10:40, 1:15, 4:05, 7:10, 10
 Escape Room (PG-13) Tue. 11:30, 12:15, 2:05, 2:50, 4:35, 5:20, 7, 7:45, 9:25, 10:15
 The Favourite (R) Tue. 1:05, 3:50, 6:50, 9:40
 Green Book (PG-13) Tue.

4:45, 7:40, 10:35
 Holmes & Watson (PG-13) Tue. 12:30, 2:45, 5:10, 7:55, 10:10
 If Beale Street Could Talk (R) Tue. 1:20, 4:25, 7:25, 10:25
 Mary Poppins Returns (PG) Tue. 10:30, 11:15, 2, 4:15, 5, 7:15, 8, 10:40
 Mary Queen of Scots (R) Tue. 1, 4, 7:05, 10:05
 The Mule (R) Tue. 10:45, 1:35, 4:10, 6:55, 9:35
 Ralph Breaks the Internet (PG) Tue. 1:25
 Second Act (PG-13) Tue. 12, 2:35, 5:05, 7:50, 10:20
 Spider-Man: Into the Spider-Verse (PG) Tue. 11, 1:55, 4:40, 7:35, 10:15
 Vice (R) Tue. 10:25, 1:20, 4:20, 7:20, 10:20
 Welcome to Marwen (PG-13)

Tue. 10:10

ROYAL PALM BEACH

Regal Royal Palm Stadium 18
 1003 State Road 7, 795-0022
 Aquaman (PG-13) Tue. 12, 1, 3:25, 4:25, 6:50, 7:20, 7:50, 10:15, 10:45
 Bumblebee (PG-13) Tue. 12:40, 1:40, 3:35, 4:35, 6:30, 7:30, 9:25, 10:25
 Dr. Seuss' The Grinch (PG) Tue. 12:05, 2:30, 4:55
 Escape Room (PG-13) Tue. 12, 2:40, 5:15, 7:55, 10:35
 The Favourite (R) Tue. 1:35, 4:35, 10:35
 Green Book (PG-13) Tue. 12:15, 6:45
 Holmes & Watson (PG-13) Tue. 12:20, 3, 5:30, 8
 If Beale Street Could Talk (R)

Tue. 1:30, 4:40, 7:40, 10:40
 Mary Poppins Returns (PG) Tue. 12, 12:30, 3:10, 3:40, 7, 10:10
 Mary Queen of Scots (R) Tue. 12:35, 7:05, 10:05
 Mortal Engines (PG-13) Tue. 7:25, 10:35
 The Mule (R) Tue. 12:10, 3:15, 6:40, 9:40
 NTR: Kathanyakudu (Not Rated) Tue. 3, 7
 Second Act (PG-13) Tue. 12:20, 3:50, 7:45, 10:25
 Simmba (Not Rated) Tue. 12:50, 4:30, 8:10
 Spider-Man: Into the Spider-Verse (PG) Tue. 1:10, 4:05, 7:10, 10:10
 Vice (R) Tue. 12:45, 3:55, 7:15, 10:30
 Welcome to Marwen (PG-13) Tue. 3:30, 9:55

HOROSCOPE



Eugenia Last

CELEBRITIES BORN ON THIS DAY:

Gaby Hoffmann, 37; Sarah Polley, 40; Genevieve Padalecki, 38; Shirley Bassey, 82.
Happy Birthday: Consider all your options and reconnect with people who can help you reach your objective. Only take on what matters to you, and refuse to let anyone manipulate you with information that is not genuine or truthful. Do your homework. Take the time to find out what’s possible before you take on a project that will be impossible to finish. Your numbers are 5, 13, 17, 26, 34, 42, 48.
ARIES (March 21-April 19): Stick to the people you know and trust. Listen carefully to your boss or anyone in a position to instruct you. Doing things right the first time will help you gain respect. If you are uncertain about something, ask

★★★★
TAURUS (April 20-May 20): Spread your wings and let your ideas and imagination flow. Turn your ideas into reality using discipline and experience to help you reach your destination. Walk away from judgmental people, and stay focused on finishing what you start ★★
GEMINI (May 21-June 20): Your intentions may be good, but attracting people who will take advantage of you if you are open and giving is likely. Say less and do more that is conducive to obtaining better emotional and physical health. ★★★★★
CANCER (June 21-July 22): You'll be drawn to individuals who pique your interest but also raise uncertainty. Listen carefully to the information you receive, but don't confront the spokesperson unless you have facts to support your thoughts. Research and question what you hear. ★★★★★
LEO (July 23-Aug. 22): Look at all your options. A sudden change will leave you at a loss. Use diplomacy to back out of a situation that

isn't unfolding the way you want it to. Focus on personal improvements and romance. ★★★★★
VIRGO (Aug. 23-Sept. 22): Get involved in something constructive. The help you offer will be gratifying, although it may not bring the returns you hoped for. If you plan to give, don't expect anything in return. Offer your services because you want to. ★★★★★
LIBRA (Sept. 23-Oct. 22): Surround yourself with like-minded people. Getting out with friends or attending a function that will allow you to connect with people who have something worthwhile to offer is recommended. Problems at home will surface, and demands will be made. ★★★★★
SCORPIO (Oct. 23-Nov. 21): Travel plans can be made, and getting together with friends or relatives will give insight into something or someone you thought you knew. Don't let your emotions take over, causing excessive behavior or an argument that will ruin an important relationship. ★★
SAGITTARIUS (Nov. 22-Dec. 21): Money and personal

documents should be updated. Helping someone is a lovely gesture, but don't let anger take over if things don't turn out as you expect. Reacting harshly won't solve a problem, but focusing on getting things done will. ★★★★★
CAPRICORN (Dec. 22-Jan. 19): Set your own standards and refuse to let what others do lead to a dispute that will waste your time and slow you down. Focus on making a positive personal change that will encourage you to look and do your best. ★★★★★
AQUARIUS (Jan. 20-Feb. 18): Joint money matters will grab your attention. Don't let anger make matters worse. Study the situation and make reasonable adjustments. You will get things in order without damaging an important relationship. Romance will improve your day. ★★★★★
PISCES (Feb. 19-March 20): Offer to help others, or call in a favor if you need help. Give-and-take is the best way to handle whatever situation you face. A suggestion made should be considered, even if you

don't like the person offering the solution. ★★★
Birthday Baby: You are

outgoing, innovative and creative. You are enthusiastic and unrelenting.

CLASSIFIED market

BUY & SELL FAST! 561-820-3830 or FAX: 561-820-3802

SUBMIT YOUR CLASSIFIED AD ONLINE:
Classifieds@pbdailynews.com

TRANSPORTATION ■ ANNOUNCEMENTS ■ BUSINESS SERVICES ■ EMPLOYMENT MERCHANDISE ■ PETS REAL ESTATE ■ RENTALS

CLASSIFIED INDEX

Palm Beach Daily News
THE SHINY SHEET

To Place a Classified Ad call:
(561) 820-3830

Email Your Classified Ad to:
Classifieds@pbdailynews.com

Customer Service Hours:
Monday-Friday 8:30 – 5:00

Promotional Rates

Daily
1 Day, 5 lines
\$17.00

Sunday
1 Day, 5 lines
\$22.60

employment

general employment

THERMAL ENGINEER II
 Job avail. for Thermal Engineer II w/ Concept Group LLC located in Palm Beach Gardens, FL. Thermal Engineer II is well versed in all heat transfer & thermal engineering principles, applications & materials & will be responsible for contributing to the technical position of the company & project management of customer-driven & research & development applications. Candidates must have Master's degree in Mechanical or Aerospace Engineering; 2 yrs' exp. as Mechanical, Aerospace or Thermal Engineer; 2 yrs' exp. w/ heat transfer principles; 2 yrs' exp. in thermal engineering applications; 2 yrs' exp. w/ software for 3D modelling & machine drawings (i.e. SolidWorks or other CAD software), FEA & CFD; & 2 yrs' exp. w/ vacuum technology (w/ respect to process equipment for high vacuum applications, behavior of materials & heat transfer under these conditions). Apply w/ resume by mail to: Jennifer Kabis, Concept Group LLC, 350 Hiatt Drive, Suite 120, Palm Beach Gardens, FL 33418, Ref Job Code #101 No Recruiters

OBITUARIES *In Memoriam*

For more information call the Obituary desk at **561.820.4376**

ONLINE OBITUARIES

- Search for obituaries
- Locate bereavement support groups

PalmBeachDailyNews.com/obits

Palm Beach Daily News

THE SHINY SHEET®

SUPPORT SERVICES.

Find bereavement support groups.

PalmBeachDailyNews.com

Click on Obituaries

Deadlines

Issue	Deadline
Sunday	3 p.m. Fri.
Monday	3 p.m. Fri.
Tuesday	3 p.m. Mon.
Wednesday	3 p.m. Tues.
Thursday	3 p.m. Wed.
Friday	3 p.m. Thurs.
Saturday	2 p.m. Fri.

Cancellations and Changes:

We take extreme care to avoid typographical errors; however, in the event of an error we are responsible only for the cost of that portion of the ad in which the error occurred, and for the first insertion date only. All advertising is subject to approval regarding credit and/or content for the ad prior to publication. The Palm Beach Daily News reserves the right to edit, reject, cancel or correctly classify any ad. PBDN makes every attempt to check sources, but is not responsible for ad content.

*NOTE: Ads may not be cancelled after deadline; please check your ad.

merchandise

antiques/collectibles

CANADIAN BUYER SEEKS QUALITY Antiques, Works of Art, Paintings, Sculpture, Glass, Porcelain, Silver, Jewelry, Orientalia. 561-801-0222

Now more than ever, the source matters.

Palm Beach Daily News

THE SHINY SHEET